

# PortLog

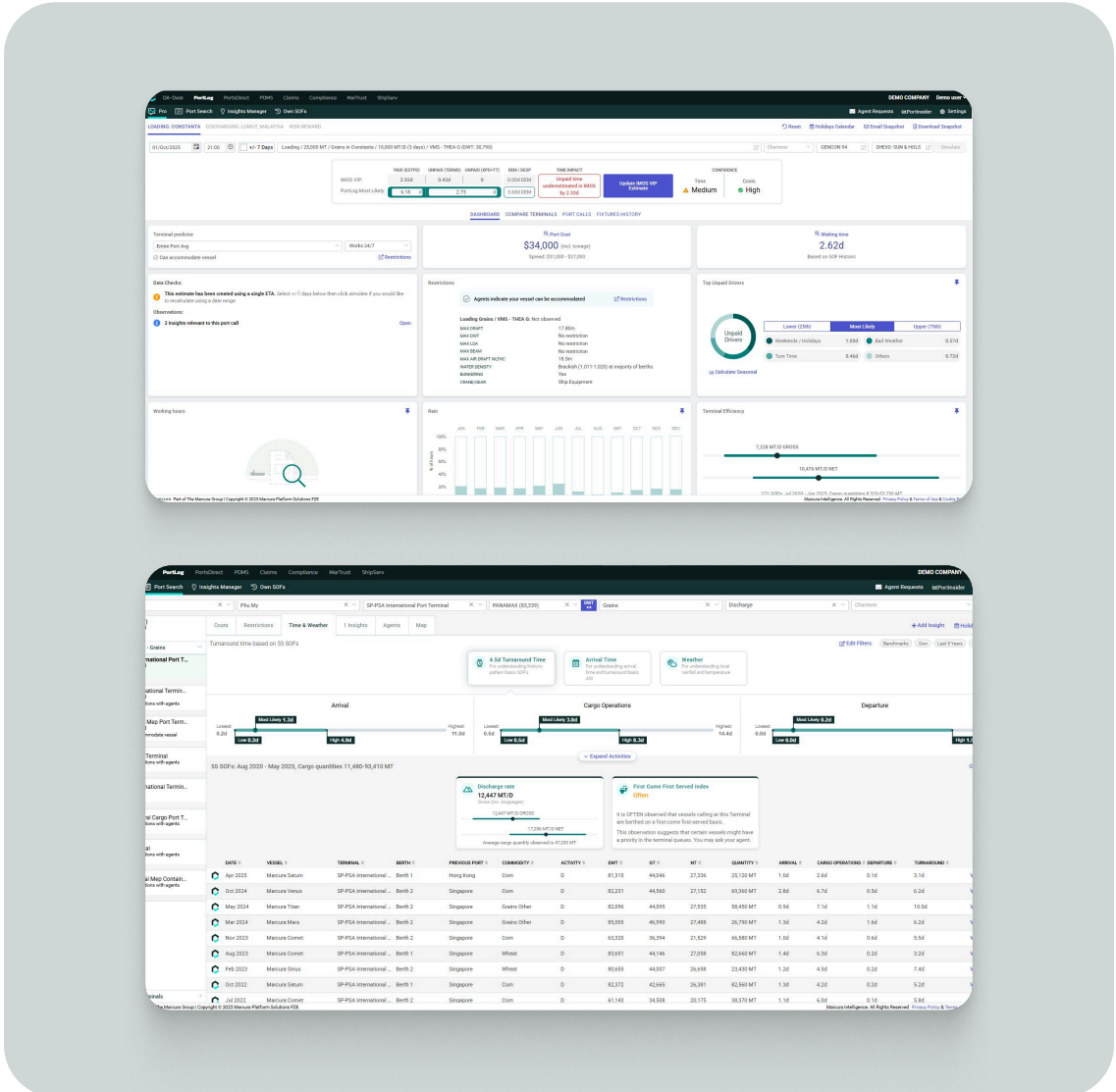
Smarter Port Decisions. Backed by Real Data.

PortLog helps chartering, commercial and operations teams make faster, more profitable voyage decisions before, during, and after every port call.



## What You Can Do with PortLog

- Quick access to port cost estimates**, combining your own data with DA-Desk benchmarks. Spot key cost drivers and make faster, more informed pricing decisions.
- Check vessel fit at berth level** to confirm your vessel's compatibility with terminal and berth-level restrictions. Access detailed insights on draft, LOA, beam, tide windows, daylight operations, and more.
- Estimate time in port accurately** using real Statement of Facts data to better predict turnaround - factoring in delays, weather, holidays, and terminal performance.
- Connect instantly to over 7,000 trusted agents** worldwide for the latest costs and restriction data right from the platform. PortLog recommends the most relevant agents based on your commodity and location.
- Continuously improve decisions** by analyzing historical trends and enhance your team's internal learning loop. Each port call becomes a smarter fixture decision.



## Why PortLog?

- **38M+** digitized port events
- **Insights powered by 7,000+** port agents
- **Trusted by leading dry bulk and tanker operators**
- **Based on real-world SoF and operational data**

## What Customers Are Saying

"Calculating cargo is our daily job, and PortLog supports every calculation. With so many variables - ships, weather, markets, and port time - having accurate data is essential. PortLog ensures our decisions are based on the best information available." - **NORDEN**

"With PortLog Pro, we can pull data directly from our estimation system into the platform - no manual entry needed. We instantly see the scenario, adjust terminal and cost options on screen, and send it straight back to the estimator. It saves time and streamlines the entire process." - **LAURITZEN BULKERS**

## Try PortLog Free

Start your free trial and discover how structured data can help you price smarter, reduce risk, and avoid costly delays.

Visit [portlog.com](https://portlog.com) to get started.

