

VesselMan

DryDock, Project Management and Inspection Platform for Maritime Teams



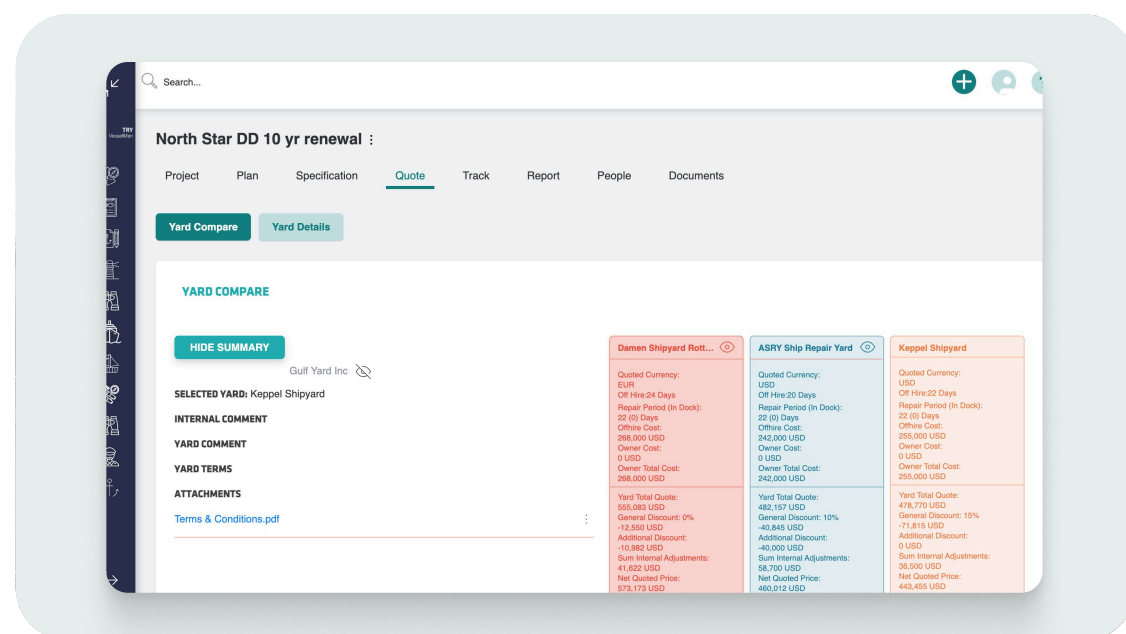
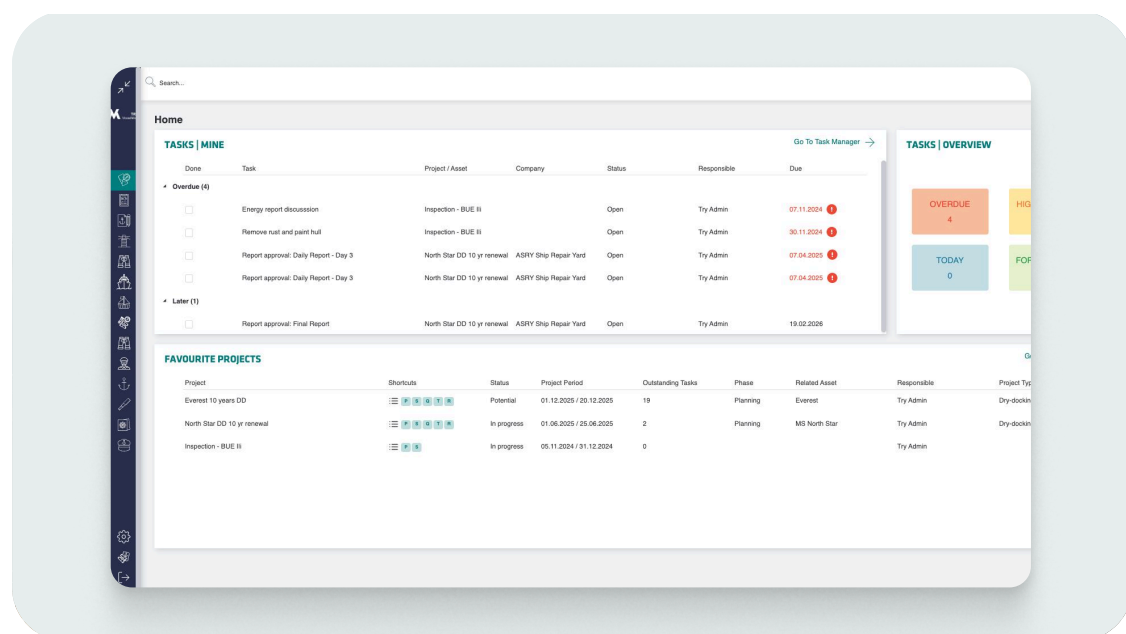
1000+ vessels

2000+ projects

1900+ users

A Purpose-Built Solution For Maritime Project Teams

VesselMan™ is a project management platform designed for dry-docking, repairs and technical operations. The platform is built for technical leaders, vessel managers, superintendents, admin teams, and yards to work collaboratively on complex time critical projects with a focus on **compliance and financial reporting**. Standardised processes and templates work in tandem with your PMS and ERP systems, enabling substantial cost reductions.



Standardise, Automate, Track, And Collaborate

- Optimise Specification Creation**
 Use built-in best practice templates to standardise planning and execution across multiple vessels and shipyards.
- Effortless Yard Quotation with Smart Comparison**
 Send specs to qualified yards. Instantly compare quotes by price, deviations, discounts, and completeness.
- Execute with Clarity Across Teams and Borders**
 Coordinate tasks, meetings and milestones with a centralised dashboard with embedded reports and KPI—ensuring real-time alignment across internal and external teams.
- Seamless Field Reporting with Actionable Insights**
 Stay connected and in control with a mobile app that works online or offline. Automate daily updates and final reports to gain transparency, benchmark performance, and manage costs across projects.

VesselMan

DryDock, Project Management and Inspection Platform for Maritime Teams



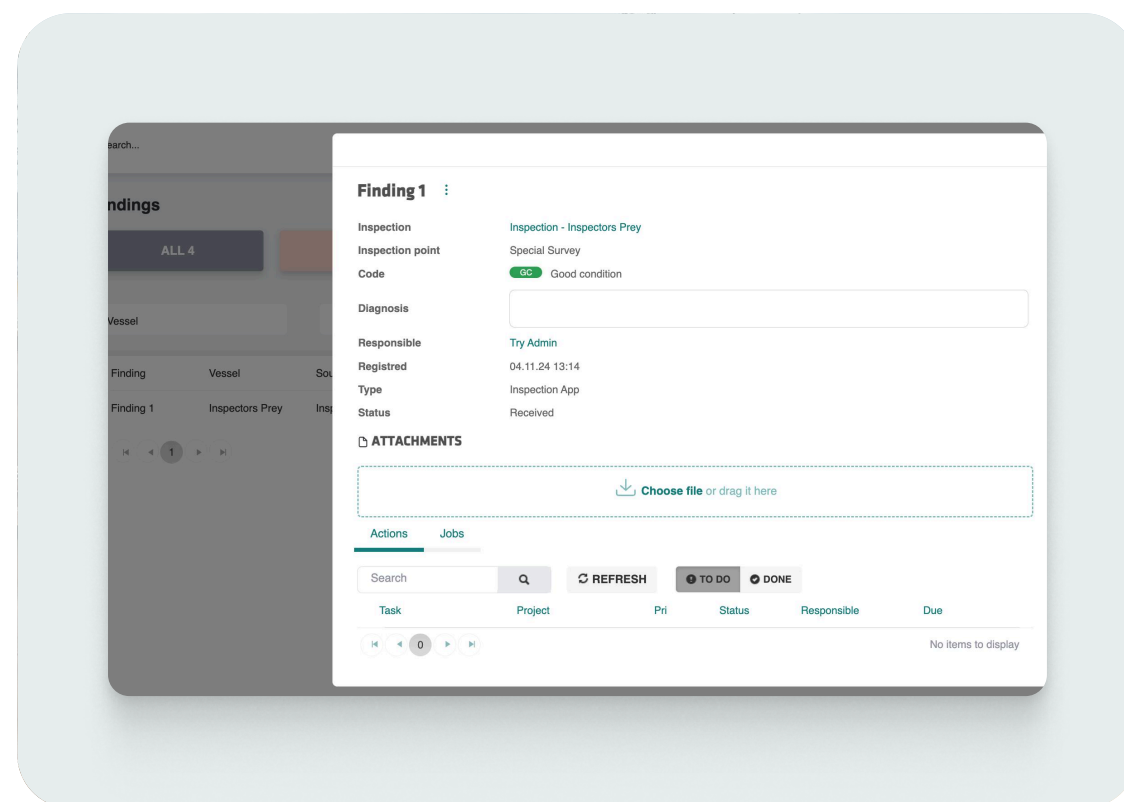
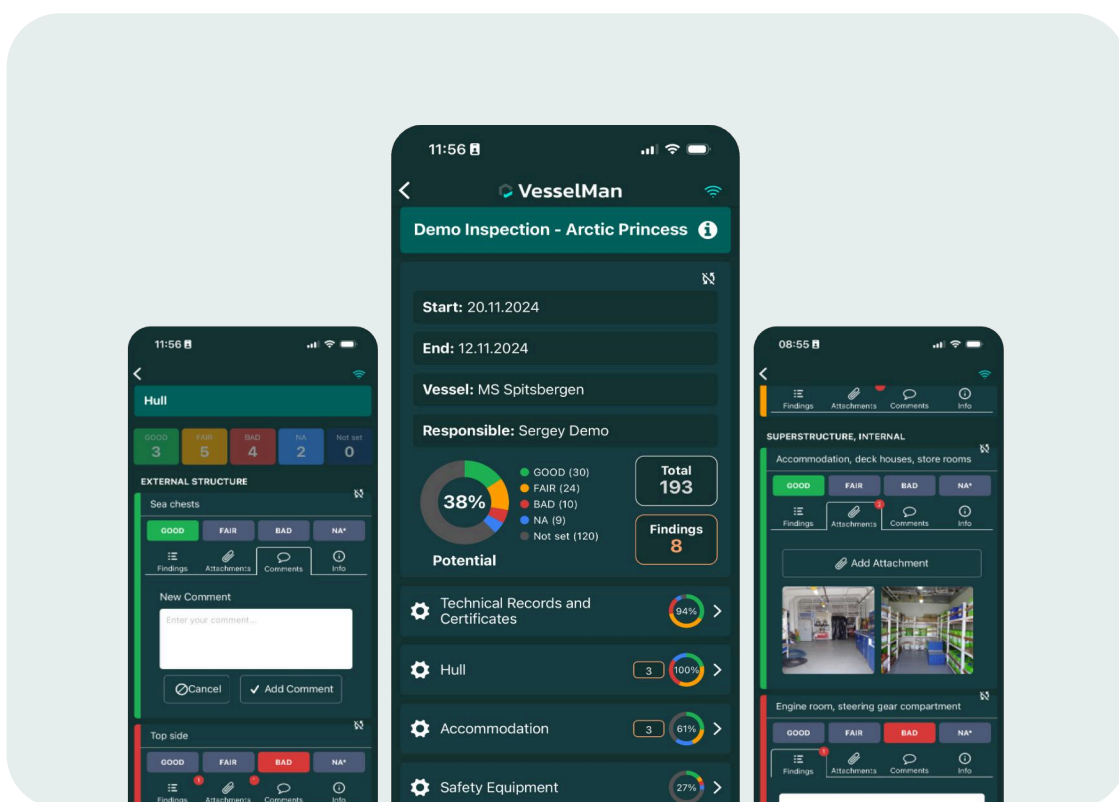
Faster, Easier, More Accurate Inspections

Streamline Inspections

Build a template library, create checklists, and report details directly via the mobile app—even offline—with automatic sync when reconnected.

Capture Findings, Images and Comments On-Site

Capture findings, images, and comments directly from your mobile device—reducing admin time and removing the need for a separate camera.



Part Of The Marcura Group

Marcura's ecosystem of market-leading products brings clarity, control, and efficiency to maritime's most complex and manual processes. Our complementary solution-set covers the entire lifecycle of voyage spend and vessel costs, removing administrative friction, simplifying compliance and enhancing profitability.

DA-Desk – Disbursement Accounting

ShipServ – Procure Supplies

MarTrust – Maritime Payments

PortLog – Port Data and Analytics

PortsDirect – Port Services

Claims – Laytime Claims Solution

Compliance – Sanction Compliance Services